

Mazaedia

(Sing. Mazaedium)

Mazaedia are fruiting bodies where the ascus walls disintegrate early on producing a powdery mass of **ascospores** on the surface of the fruiting body so that it appears covered in a sooty mass of spores (if touched this dust comes off on your fingers).

Mazaedia are found in a range of structures and families of lichens; as apothecia on stalks in crustose Caliciales, sessile in Arthoniaceae e.g. *Tylophoron moderatum* and in a perithecium in Pyrenulaceae as *Pyrgillus javanicus*. Also found in fruticose *Sphaerophorus* species as terminal spherical mazaedia



Chaenotheca brunneola

©Leif Stridvall



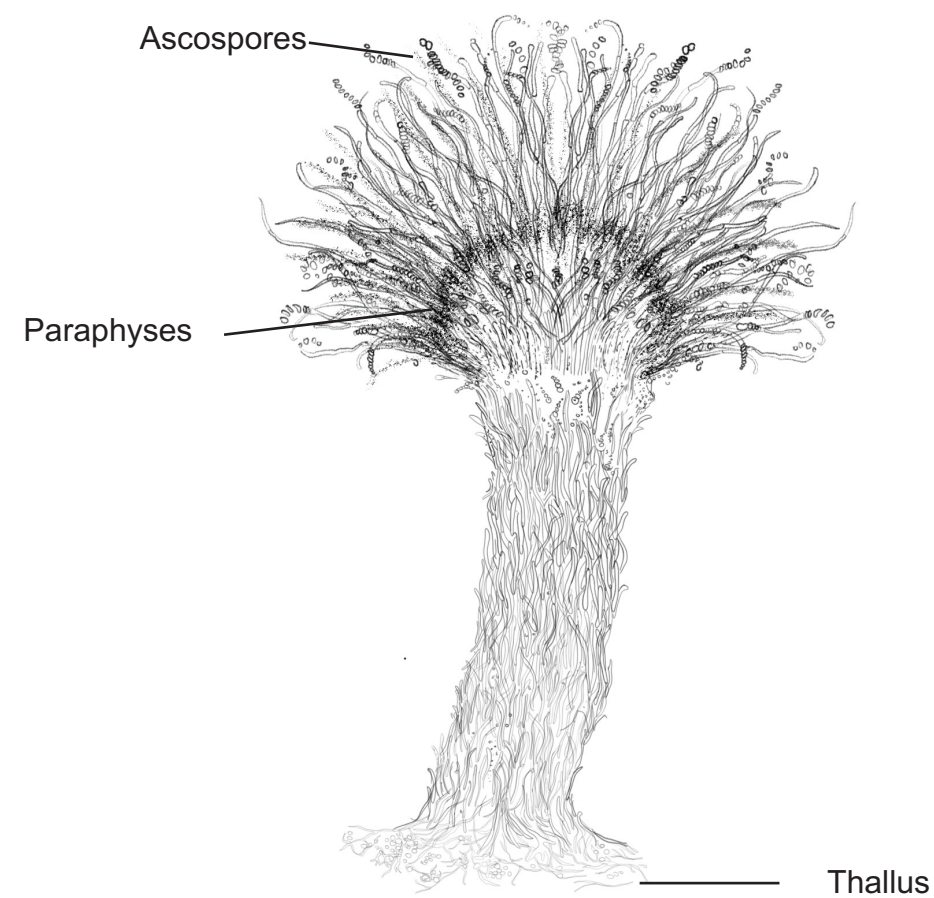
Chaenotheca chrysocephala

©Leif Stridvall



Chaenotheca ferruginea

©Walter Obermayer



Ascospores

Paraphyses

Thallus



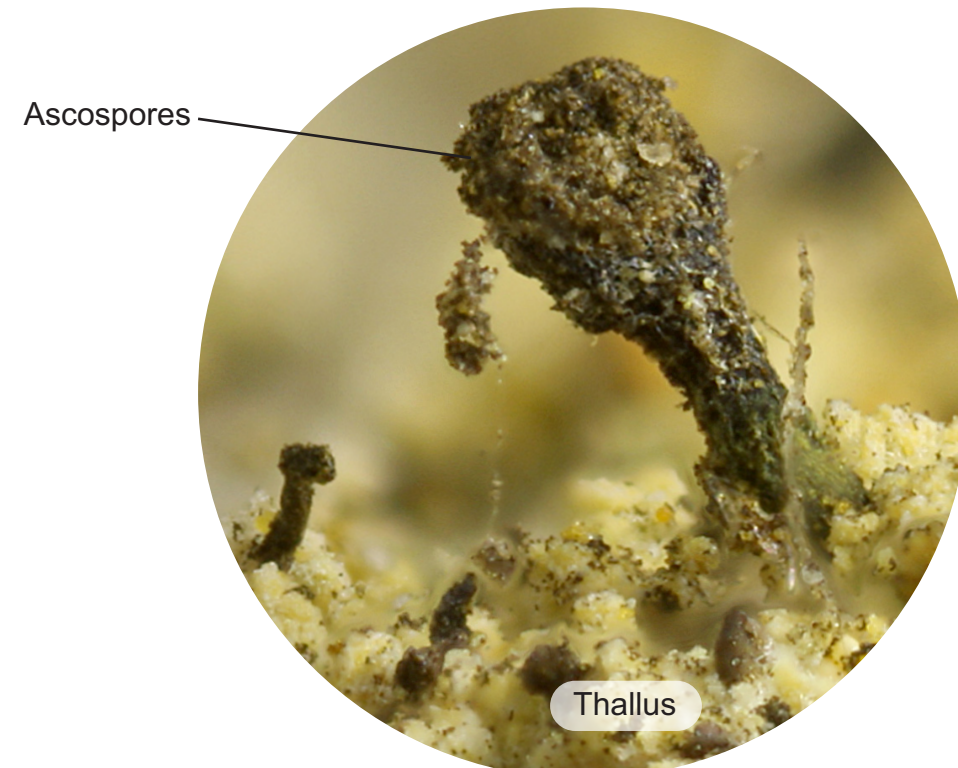
Chaenotheca furfuracea

©Walter Obermayer



Chaenotheca chrysocephala

©Adriano Spielmann



Ascospores

Thallus

Chaenotheca ferruginea

©Felix Schumm



Calicium hyperelloides

©Adriano Spielmann