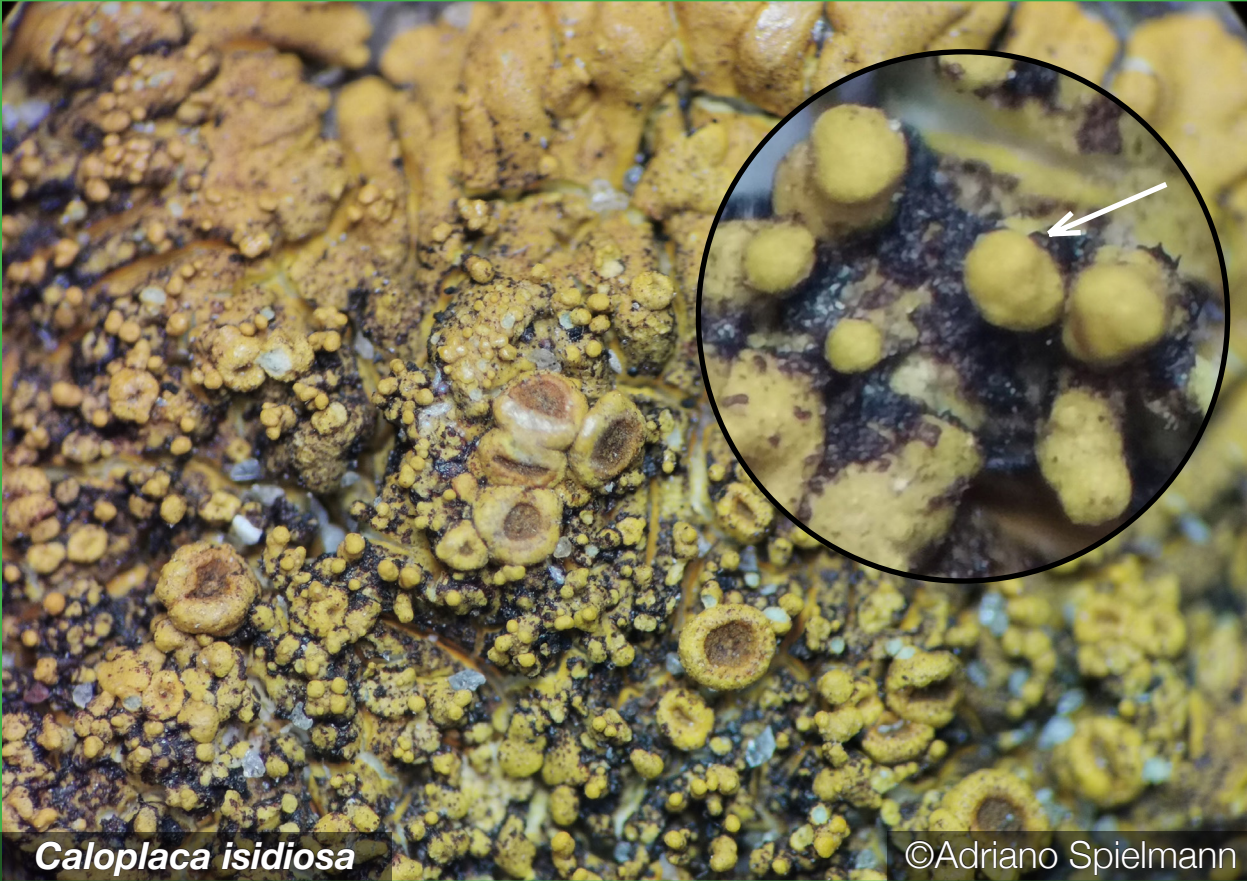


Isidia

(sing. isidium)

Isidia are outgrowths from the upper surface or margins of a thallus that serve as asexual dispersal units. Isidia have a continuous **cortex** and contain **fungus and photobiont cells**. Isidia may vary in structure from a simple pin-like or globose shape to a much branched and coralloid structure, and the term often includes similar propagules such as dactyls that may become sorediate (e.g. *Dirinaria aegialita*) and pseudoisidia that have a discontinuous cortex (e.g. *Usnea cornuta*)



Caloplaca isidiosa

©Adriano Spielmann



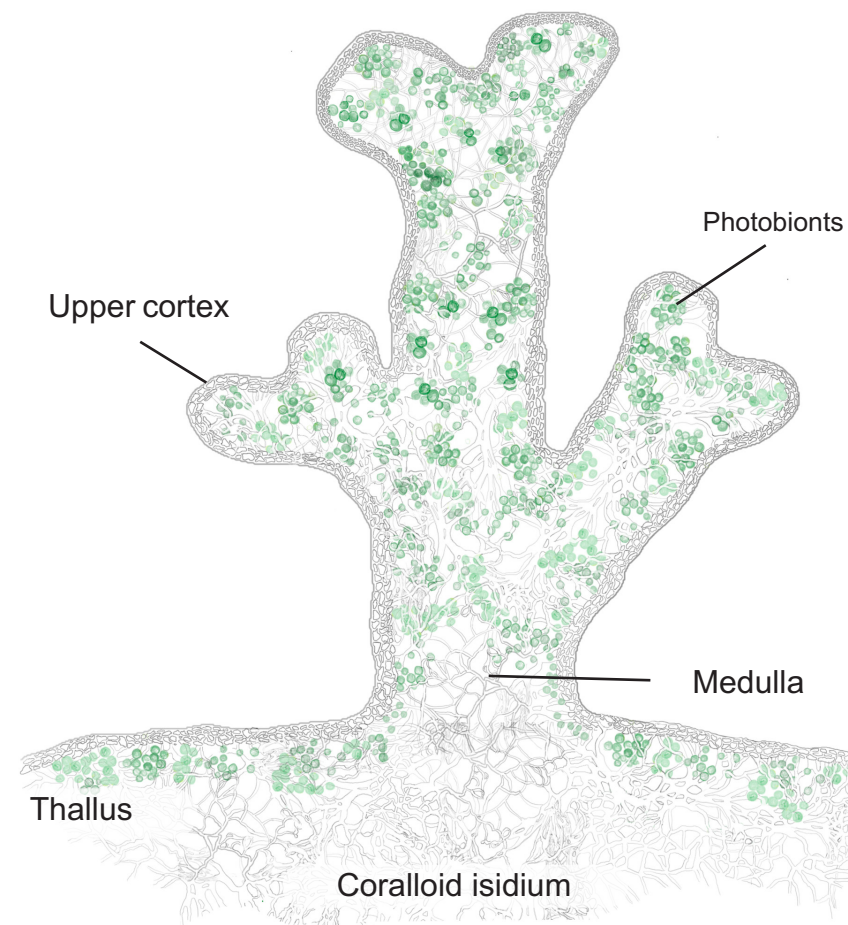
Hypotrachyna minarum

©Adriano Spielmann



Parmelinella salacinifera

©Adriano Spielmann



Parmotrema tinctorum

©Adriano Spielmann



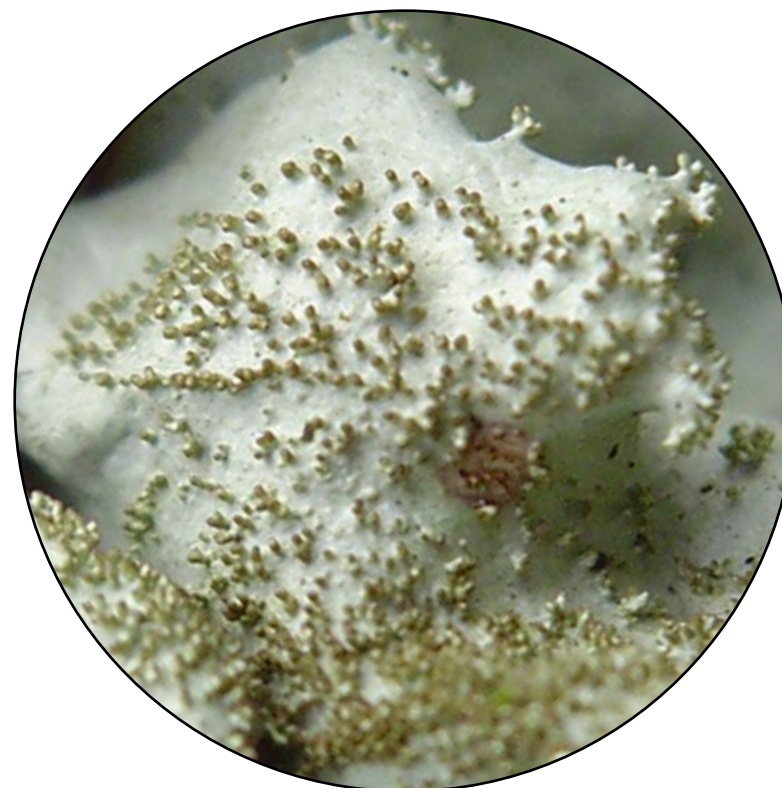
Acanthotrema brasilianum

©Adriano Spielmann



Acanthotrema brasilianum

©Adriano Spielmann



Lobariella exornata

©Adriano Spielmann