

# Apothecia 1

(Sing. Apothecium)

Fruiting bodies with an open, saucer-shaped or cup-shaped disk, in which the hymenium, composed of asci and paraphyses, is exposed at maturity.

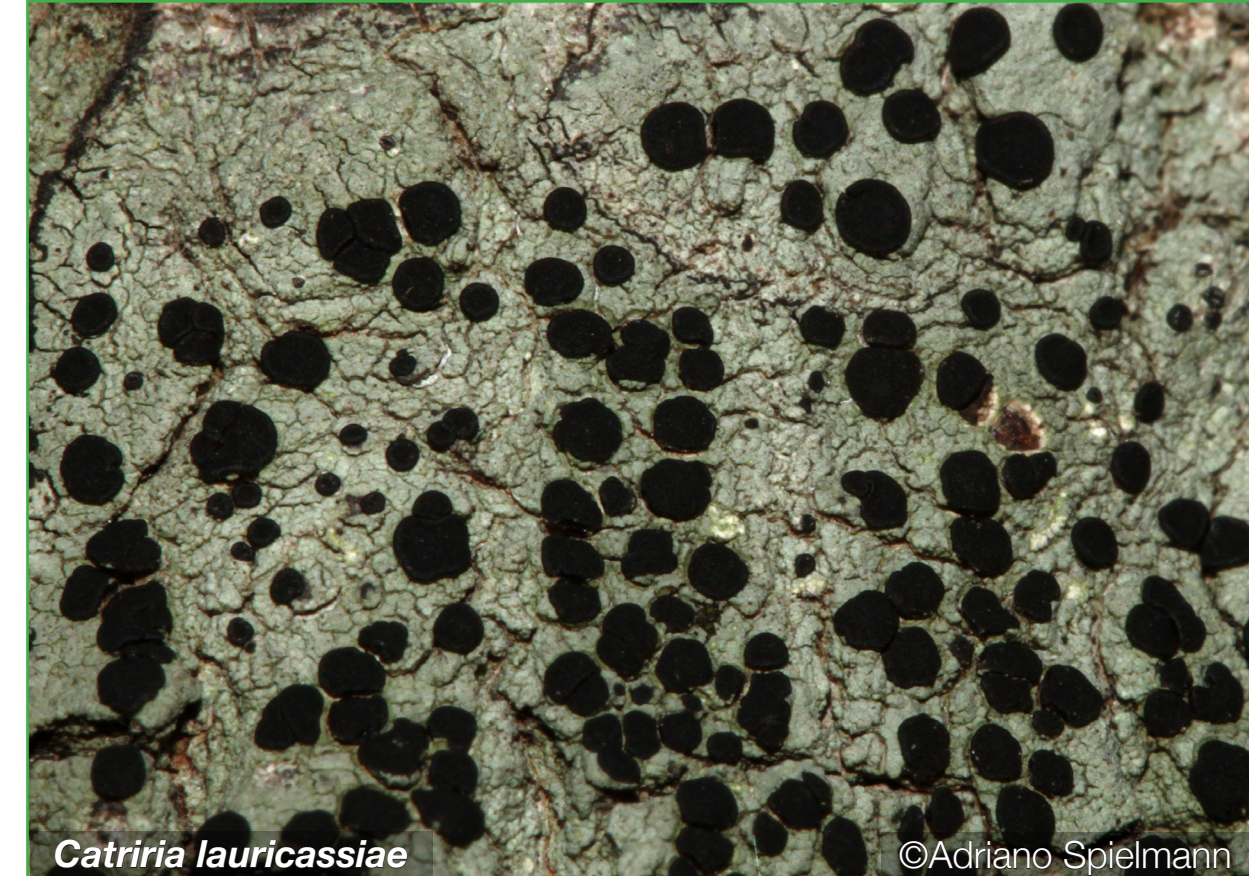
**Lecanorine:** An apothecium in which the disk-like hymenium is surrounded by a thick **thalline exciple**, appearing the same colour as the thallus and composed of a cortex around fungal and photobiont cells. Found in all growth types.

**Lecideine:** An apothecium in which disk-like **hymenium** is surrounded by a **proper exciple** that is composed only of fungal cells, appearing a different colour to the thallus. Found in all growth forms but more commonly in crustose species.



*Parmotrema cetratum*

©Adriano Spielmann



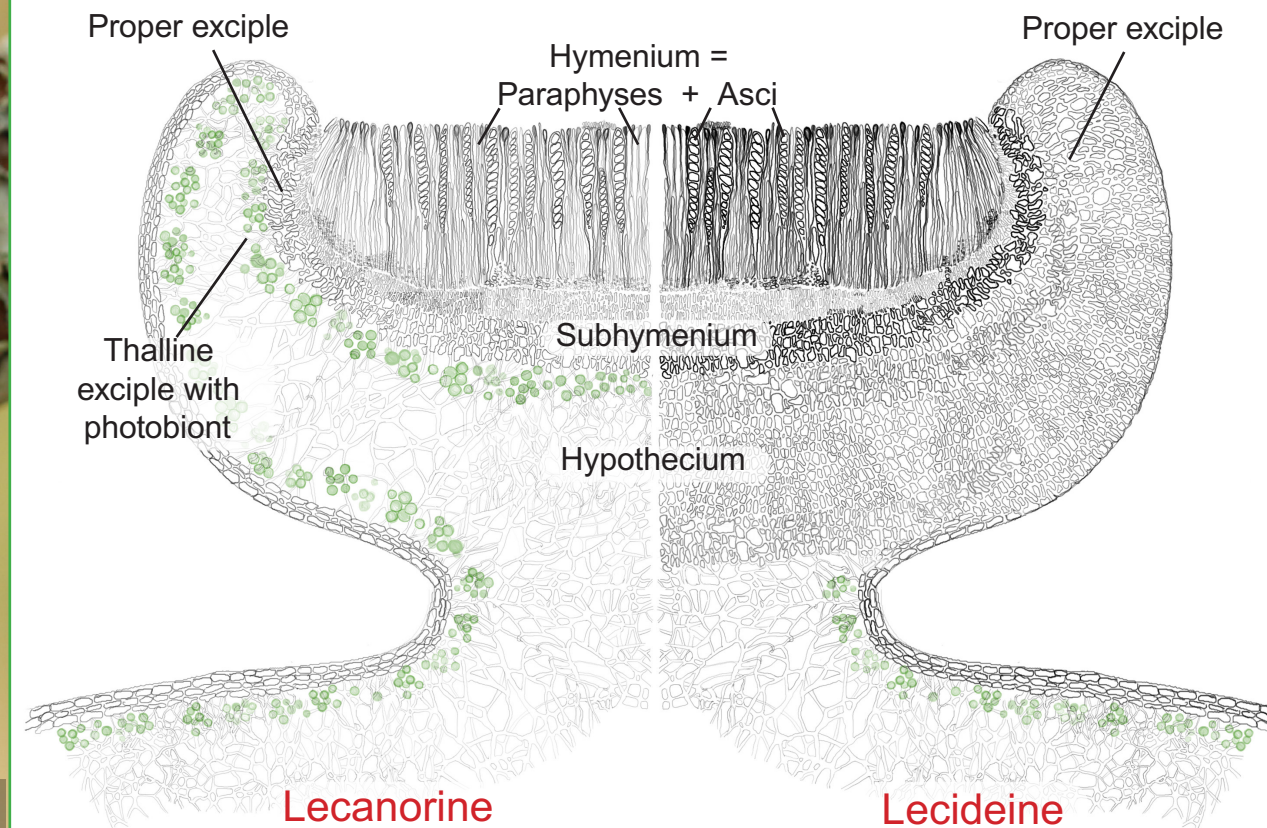
*Catiria lauricassiae*

©Adriano Spielmann



*Bulbothrix regnelliana*

©Adriano Spielmann



Lecanorine

Lecideine



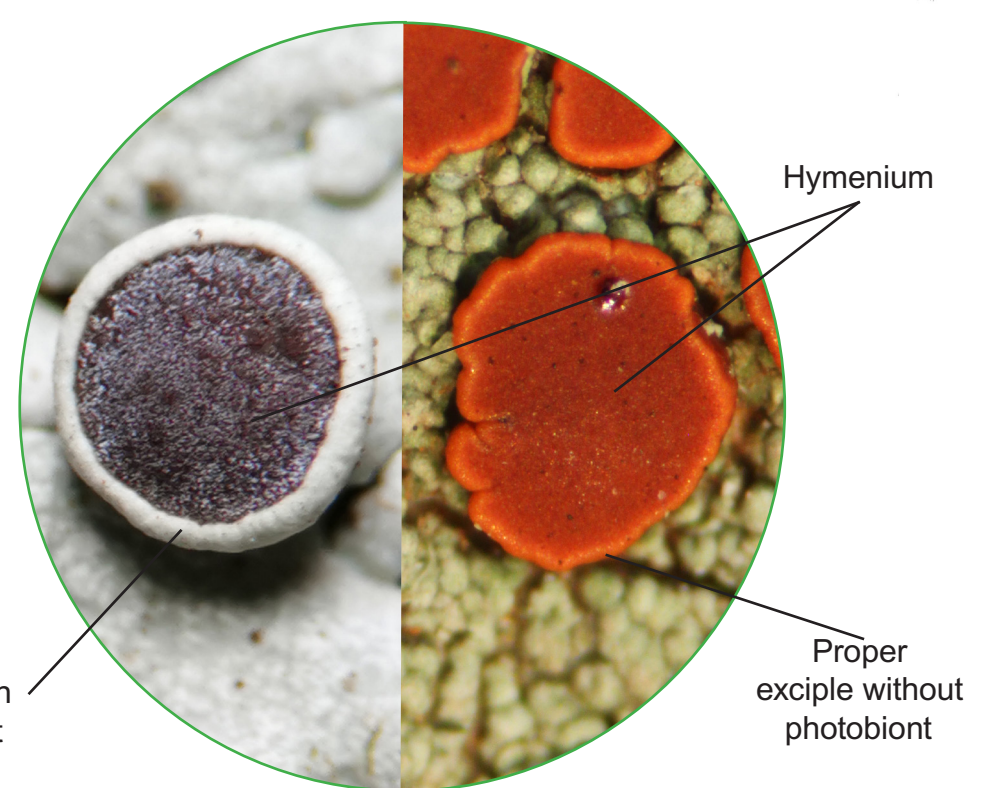
*Ramboldia russula*

©Adriano Spielmann



*Usnea* sp.

©Adriano Spielmann



Thalline exciple with photobiont

Hymenium

Proper exciple without photobiont

*Physcia* sp.

©Adriano Spielmann



*Brigantiaea leucoxantha*

©Adriano Spielmann